

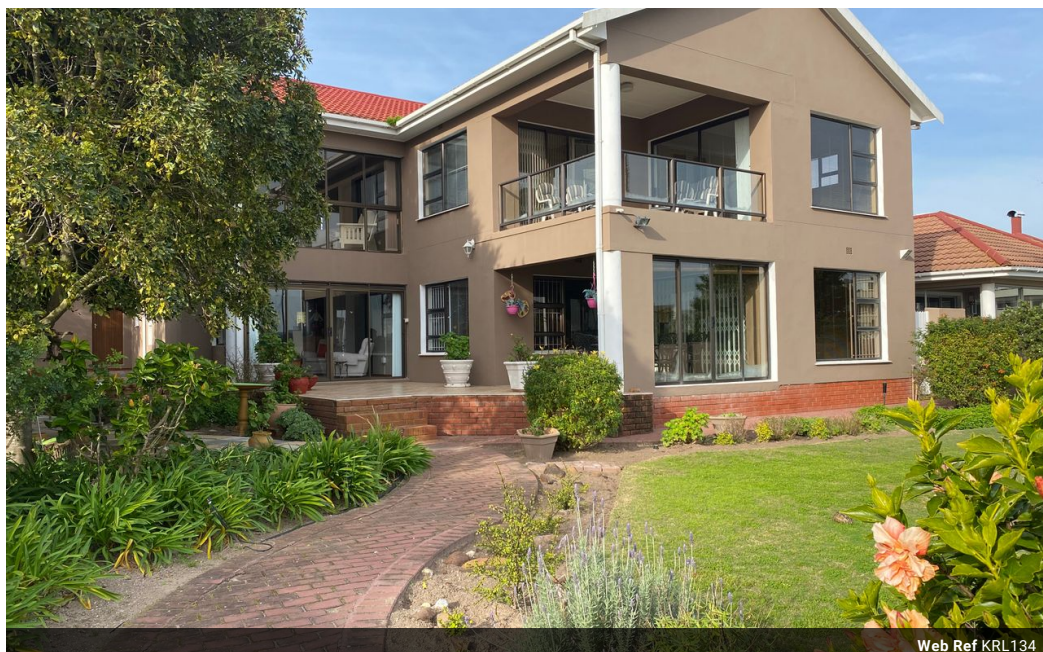


Willem Erasmus
073 921 3574
willem@keageoz.co.za

Contact Garden Route

086 1778877

Regus Office
Shamrock Building 2nd Floor
97 York Street
George
6530



Web Ref KRL134



R6,750,000

4 2 4

Monthly Bond Repayment R68,527.95

Calculated over 20 years at 10.75% with no deposit.

Transfer Costs R606,266.00 **Bond Costs** R70,535.00

These calculations are only a guide. Please ask your conveyancer for exact calculations.

Monthly Rates R3,300

Waterfront View!

This 4 bedroom home is situated in Port Owen on the Marina with a spectacular view. It is so easy to relax in the double story home with with the Lagoon breeze at your front yard.

When entering the this 4 bedroom home, the following is to offer:

Intercom and camera system for your safety.

Dinning area with built-in braai that leads to the patio with an outstanding view on the Marina.

Lounge with gas braai, gives a warmth feeling to this home.

Huge laundry, witch has a back door to the outside, that leads you to the servants quarters, consists out of 1 bedroom and a full bathroom.

Downstairs there are 2 bedrooms, and both are facing on the lagoon, what a view.

Kitchen has plenty of built-in cupboards, top/bottom oven and tile flooring.

Features

Pets Allowed		Yes			
Interior				Exterior	
Bedrooms	4			Garages	4
Bathrooms	2			Carports / Parkings	4
Kitchens	2			Security	No
Recep. Rooms	4			Dom. Accom.	1
Studies	1			Pool	No
Furnished	No			Views	True
				Sizes	
				Land Size	876m ²