



Johann Cronje
082 953 7120
johann@kpsgardenroute.co.za



Zelna Cronje
082 370 0156
zelna@keageoz.co.za

Contact Garden Route

086 1778877

Regus Office
Shamrock Building 2nd Floor
97 York Street
George
6530

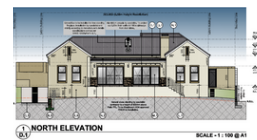
3 Bedroom House For Sale in Kraaibosch Manor

UNDER OFFER



SOLE MANDATE

Web Ref KRL285



R5,850,000

3 2 2

Monthly Bond Repayment R58,405.22

Calculated over 20 years at 10.5% with no deposit.

Transfer Costs R501,478.00 **Bond Costs** R65,785.00

These calculations are only a guide. Please ask your conveyancer for exact calculations.

Monthly Levy R1,583 **Monthly Rates** R1,300

WORK IN PROGRESS - KRAAIBOSCH MANOR'S LATEST ADDITION - SCHEDULED FOR COMPLETION AT THE END OF AUGU

View and secure this work in progress within popular Kraaibosch Manor.

A site that presents full North facing views and unspoilt mountain scapes as daily "eye and soul candy".

This home features a single level lay-out with practical sized rooms and emphasis on the entertainment and semi open plan living.

Host to three bedrooms served by two bathrooms with gas heated water supply and gas/electric cooking options.

Bedrooms are spacious- two of which features North facing mountain exposure and the third at the South West side of the house.

The entertainment area of the houses also maintained to the same level as the main living areas and certainly allow for adequate space for frequent use - an area that has not been neglected by any means.

The garage relays to the South (back) of the house in order to maintain a single...

Features

Pets Allowed Yes

Interior

| | |
|--------------|----|
| Bedrooms | 3 |
| Bathrooms | 2 |
| Kitchens | 1 |
| Recep. Rooms | 3 |
| Studies | 1 |
| Furnished | No |

Exterior

| | |
|---------------------|------|
| Garages | 2 |
| Carports / Parkings | 2 |
| Security | Yes |
| Pool | No |
| Views | True |

Sizes

| | |
|------------|-------------------|
| Floor Size | 269m ² |
| Land Size | 735m ² |

Extras

Fireplace 24 Hour Access Backup Water Built In Braai Built in Wardrobes Centre Island Covered
Patio Dishwasher Connection Double Basin Electric Garage Gas Oven Garden Granite Tops