

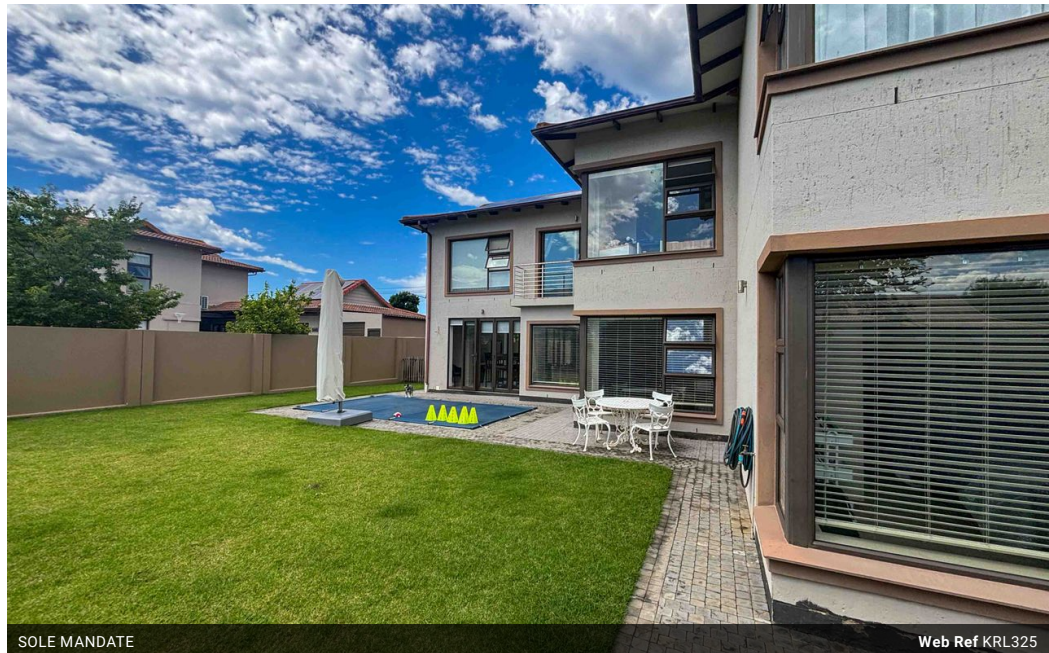


**Johann Cronje**  
082 953 7120  
johann@kpsgardenroute.co.za

Contact Garden Route

086 1778877

Regus Office  
Shamrock Building 2nd Floor  
97 York Street  
George  
6530



SOLE MANDATE

Web Ref KRL325



**R6,895,000**

 4  3  2

**Monthly Bond Repayment** R70,000.04

Calculated over 20 years at 10.75% with no deposit.

**Transfer Costs** R622,216.00 **Bond Costs** R70,535.00

These calculations are only a guide. Please ask your conveyancer for exact calculations.

**Monthly Levy** R2,009 **Monthly Rates** R1,910

## EARLS COURT PRESENTS A FAMILY FRIENDLY 4 BEDROOM HOME

Situated within the prestigious Earls Court Lifestyle Estate in George, this stunning double-story family home offers luxury, security, and a preferred lifestyle.

Situated in one of the most sought-after estates in the region, this property combines thoughtful design with premium amenities.

Four spacious North-facing bedrooms ensure an abundance of natural light and stunning mountain views. Three are located on the first floor, with a fourth on the ground floor.

Additionally, a private study is perfectly suited for a home office or quiet workspace.

The ground floor is host to three elegant living areas, including an open-plan kitchen with dining and lounge areas, and a separate entertainment lounge that opens up to the backyard and pool area—ideal for hosting family and friends.

A stainless-steel built-in braai, covered...

## Features

**Pets Allowed** Yes

### Interior

Bedrooms	4
Bathrooms	3
Kitchens	1
Recep. Rooms	3
Studies	1
Furnished	No

### Exterior

Garages	2
Carports / Parkings	2
Security	Yes
Pool	Yes
Views	True

### Sizes

Floor Size	380m <sup>2</sup>
Land Size	937m <sup>2</sup>