

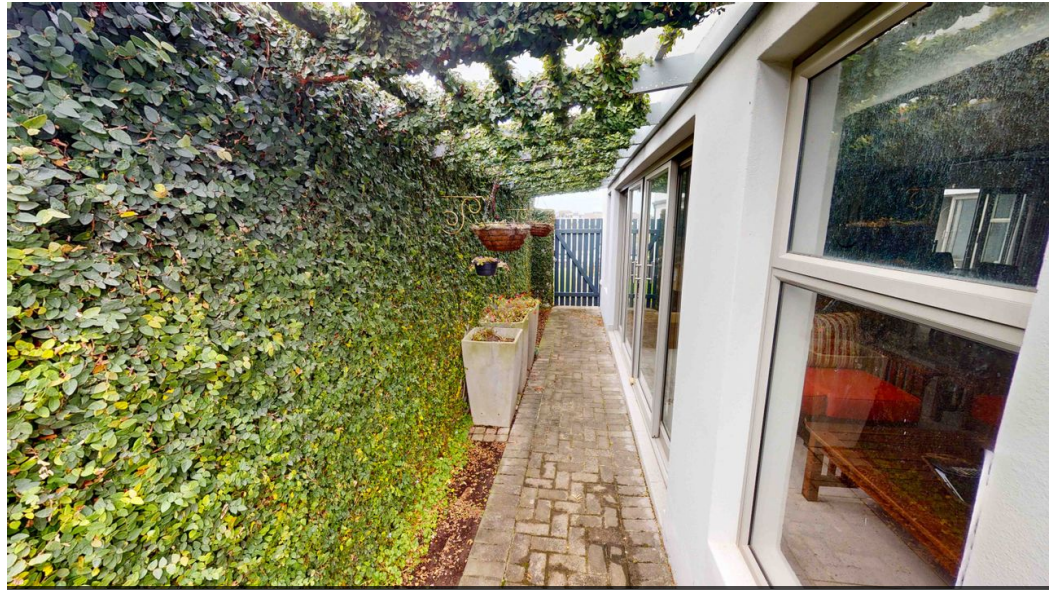


Johann Cronje
082 953 7120
johann@kpsgardenroute.co.za

Contact Garden Route

086 1778877

Regus Office
Shamrock Building 2nd Floor
97 York Street
George
6530



Web Ref KRL361



R4,695,000

3 3 2

Monthly Bond Repayment R46,873.94

Calculated over 20 years at 10.5% with no deposit.

Transfer Costs R366,798.00 **Bond Costs** R59,150.00

These calculations are only a guide. Please ask your conveyancer for exact calculations.

Monthly Levy R1,357

A 3 BEDROOM STYLISH EXTRAVAGANZA - BE QUICK TO SECURE

View and secure this above average Blue Mountain Village home situated in a prime position.

Explore also the 3D tour of this home - technology featured by KPS Garden Route for their client portfolio making it easy for you to explore the asset extensively, plan your relocation with actual sizes given the interactive measuring tools.

This fine asset features upmarket finishes and trimmings - not a low spec house - and offers a spacious interior with predominantly tiled flooring, a trio of living areas being a sun lounge, an expansive open plan lounge and dining area and a separate enclosed entertainment lounge all in close proximity to the stunning kitchen.

The kitchen is hosts to featured tiling amidst cupboard in excess and also presents an expensive freestanding oven, featured lighting, provision for a double fridge and...

Features

Pets Allowed	Yes				
Interior		Exterior		Sizes	
Bedrooms	3	Garages	2	Floor Size	249m ²
Bathrooms	3	Security	Yes	Land Size	586m ²
Kitchens	1	Pool	No		
Recep. Rooms	3	Views	True		
Furnished	No				