

AREAS:
 Ground floor: 339 m²
 New addition: 44 m²
 First floor: 47 m²
 TOTAL: 430 m²

NEW POOL AREA 21m²
ADDITION COST R10 000

ROOF
 Marley shingle cement tiles fixed with copper nails as to manufacturers fixing spec on 38x38 battens on 22mm T&G treated pine ceiling boards fixed to trusses at 600mm c/c with 40mm thermal blanket on 220 x 50 mm roof rafters at c/c distances as specified by roof engineer, fixed with galvanised brackets to wallplate, specification & fixing detail by Engineer.

CONCRETE SLABS
 Reinforced concrete slab to engineers details 5:1 sand/cement screed laid to fall to fullbore outlets with Bituthene 5300 waterproofing system fixed according to manufacturers specifications with 50mm layer of approved 13mm stone aggregate to be laid evenly on roof surfaces. Colour to Architect's specifications.

FLOOR CONSTRUCTION
 Floor finish as noted on floorplan, on 30mm screed, 100mm surface bed, on 250 micron usb green dpm, on 50mm sandlayer, on compacted fill in layers not exceeding 150mm to 98% AASHTO

CONCRETE SURFACE BED
 100mm Thick (minimum 15mPa) cast level, a minimum of 228mm above ground level on one layer 250 micron Consol plastics gunplas USB green waterproof sheeting sealed at laps with gunplas pressure sensitive tape laid continuous under surface beds as indicated on architects and engineers drawings.
 25mm Thick river sand blinding layer on approved hardcore filling compacted to structural engineers specifications.
 Finish with 30mm cement / riversand (1:4) screed applied to a smooth and even finish to take floor finish.

REINFORCED CONCRETE SLAB
 To structural engineers specifications with 25mm cement / river sand (1:4) screed applied to a smooth and even finish to take floor finish

FLOOR CONSTRUCTION
 Floor finish as noted on floorplan, on 30mm screed, 100mm surface bed, on 250 micron usb green dpm, on 50mm sandlayer, on compacted fill in layers not exceeding 150mm to 98% AASHTO

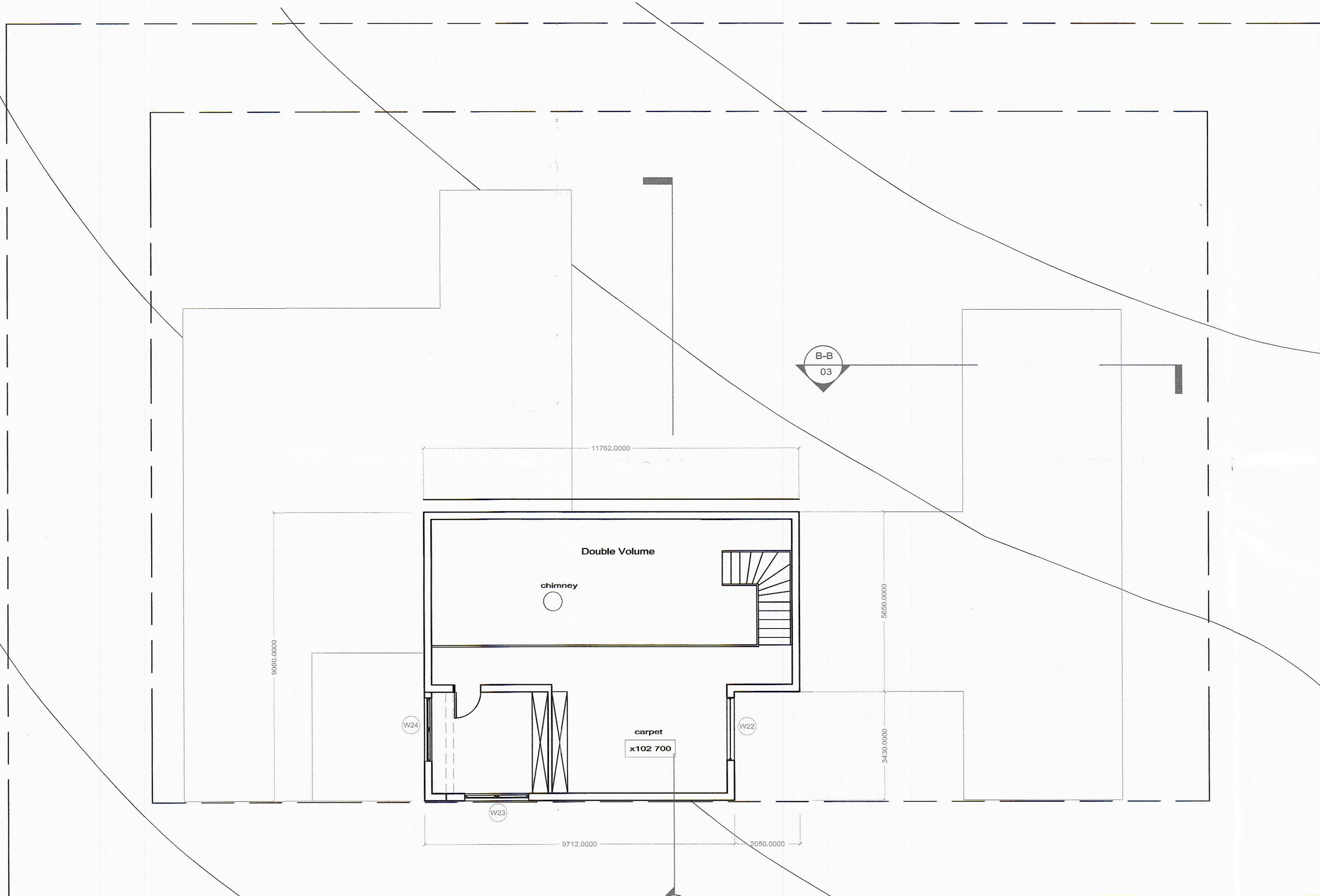
FLOOR FINISH ON VERANDAH
 Approved tile finish with fall to outside of verandah on 30mm screed, 100mm surface bed, on 250 micron usb green dpm, on 50mm sandlayer, on compacted fill in layers not exceeding 150mm to 98% AASHTO
 Concrete strip foundations & surfacebed thickening to Engineers spec.
 Foundation walls to be concrete filled to underside of 375 micron dpm in walls.
 Expansion & control joints according to engineers spec.

WALLS
 Clinker brick 230mm ext walls

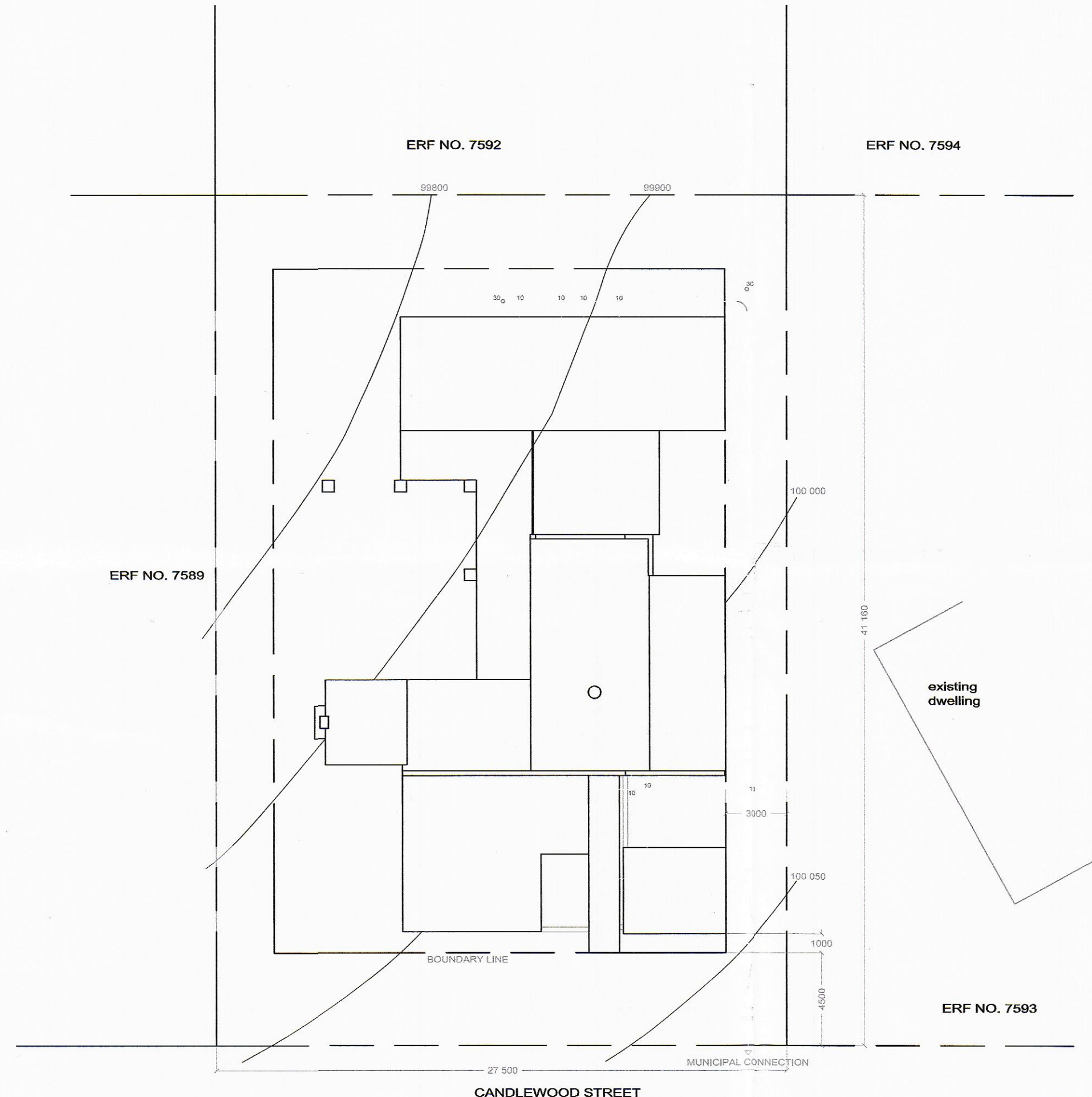
WINDOWS AND DOORS
 Purpose made timber doors and windows as per schedule
 Interior doors to be semi-solid.
 All glass used to be SABS approved.

RAINWATER GOODS
 Seamless aluminium -charcoal colour - square profile gutters and downpipes.

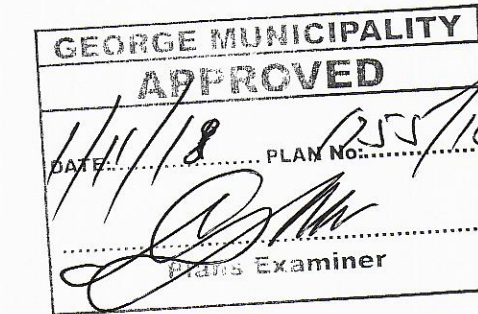
ROOF
 Marley shingle cement tiles fixed with copper nails as to manufacturers fixing spec on 38x38 battens on 22mm T&G treated pine ceiling boards fixed to trusses at 600mm c/c with 40mm thermal blanket on 220 x 50 mm roof rafters at c/c distances as specified by roof engineer, fixed with galvanised brackets to wallplate, specification & fixing detail by Engineer.



FIRST FLOOR
1:100



SITE PLAN
1:200



architect

SCOTT ARCHITECTS
Towards Sustainability

project	
ERF NO. 7591	
drawing	
FIRST FLOOR AND SITE PLAN	
scale	drawn GS
date	checked SS
2018/07/06	
drawing no.	revision
02	0